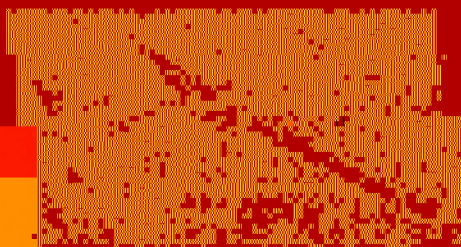


CENTER OF INDUSTRIAL ELECTRONICS

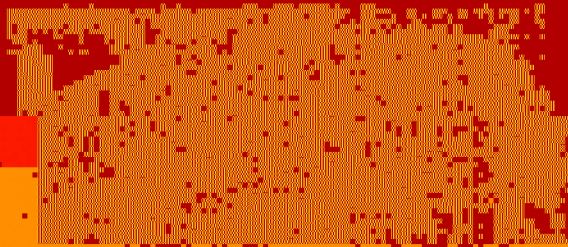
RESEARCH LINES

POWER ELECTRONICS

- Design of power supplies
- Modelling and simulation of systems and electronic devices
- Design and application of digital control



■ Design of a power supply for a motor drive system.

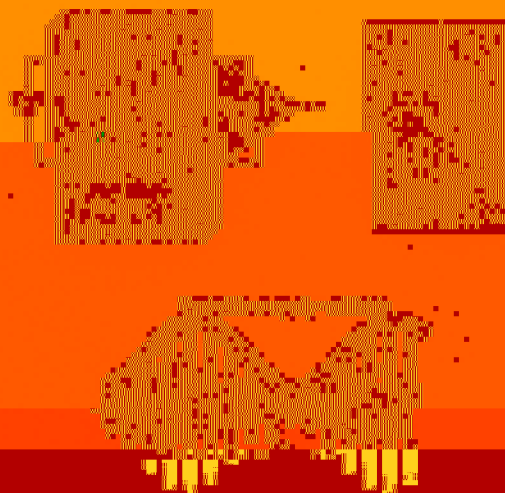


■ Multi-phase inverter (3/6/9/6 phases) with digital control for implementation based on a DSP.



■ Design of a power system for a motor drive system.

■ Modelling and design of different systems and components (power components, flat cables, electronic systems, ...)



■ Design of the power converter for a multi-phase (3/6) inverter based on a multi-phase inverter with multilevel.