



2016 毕业生 就业质量年度报告

招生就业工作处
二〇一六年十二月

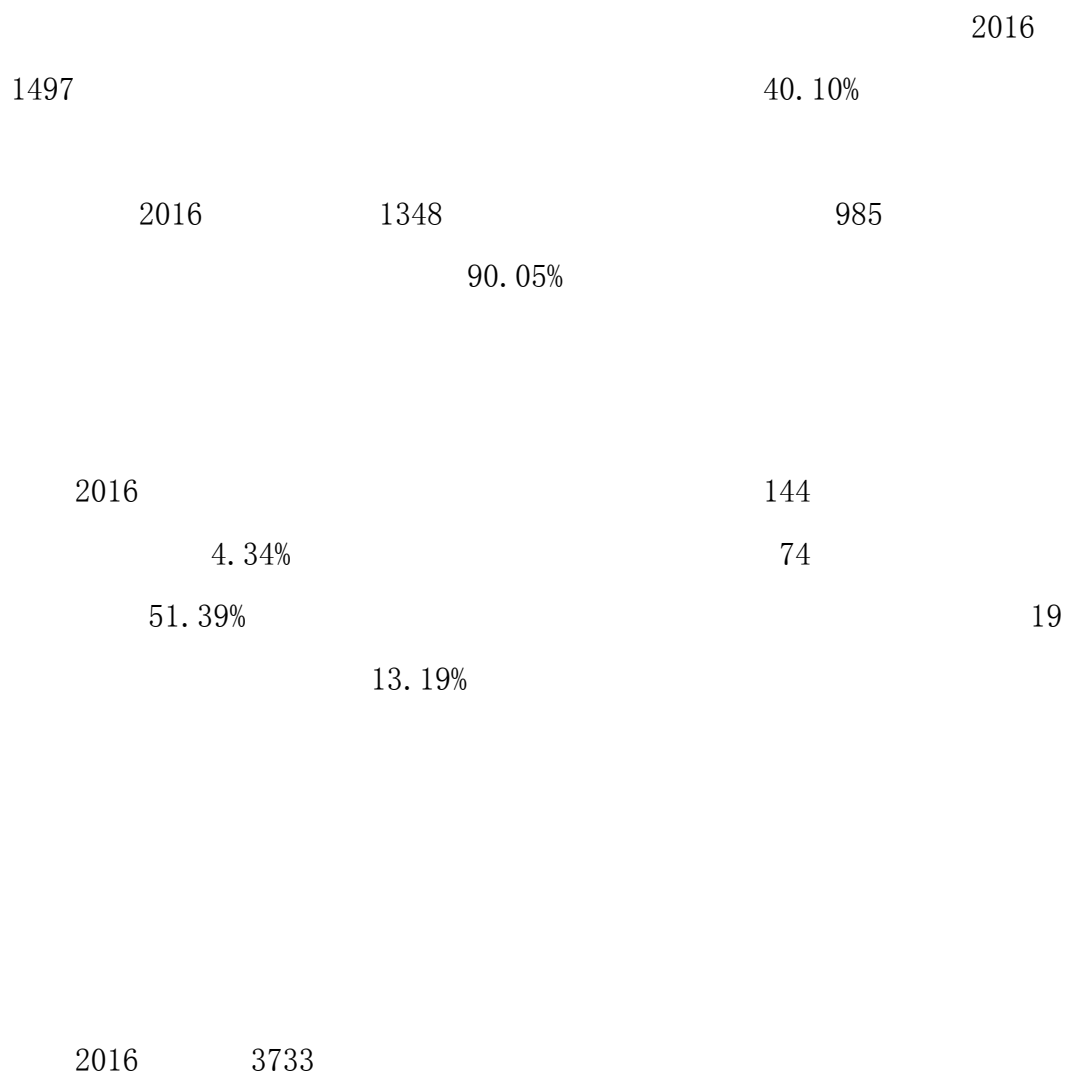
2016	1
2016	2
	2
	2
	2
	2
	2
	5
	5
	5
	7
	8
	10
	10
	10
	13
	13
	14
	21
	21
	21
	21
	22
	22
	23
	23
	25
	25
	25

.....	25
.....	26
.....	27
.....	27
.....	27
.....	28
.....	28
.....	28
.....	29
.....	30
.....	31
.....	31
.....	32
.....	33
.....	34
.....	34
.....	34
.....	35
.....	35
.....	35

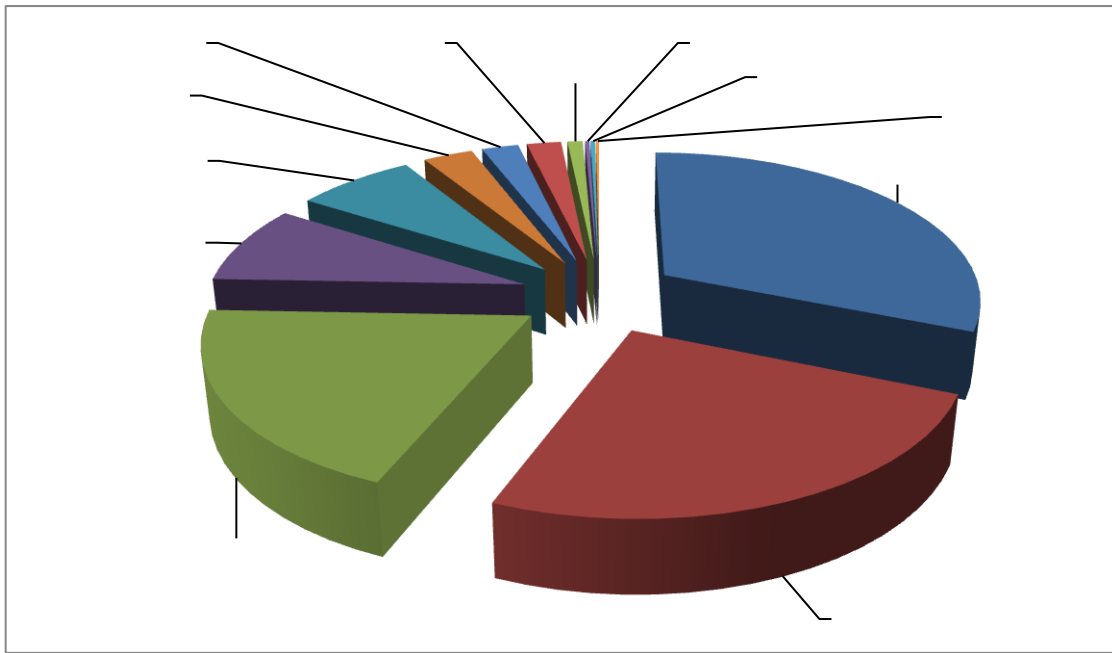
第一章 2016 年毕业生就业基本情况

2016		7445		64		0.87%
	3733	3318		394		
		2530	1203		2.10	1 392

第二章 2016 年毕业生就业情况分析



16			10	1.19%
17			10	1.19%
18			10	1.19%
19			10	1.19%
20			9	1.07%
21			9	1.07%
22			9	1.07%
23			9	1.07%
24			9	1.07%
25			9	1.07%
26			9	1.07%
27			9	1.07%
28			9	1.07%
29			8	0.95%
30			8	0.95%
31			8	0.95%
32			8	0.95%
33			8	0.95%
34			8	0.95%
35			7	0.83%
36			7	0.83%
37			7	0.83%
38			7	0.83%
39			7	0.83%
40			7	0.83%
41	-		7	0.83%
42			6	0.71%
43			6	0.71%
44			6	0.71%
45			5	0.59%



2

168

146

99

5

10

1		168
2		146
3		99
4		98
5		88
6		84
7		68
8		64
9		46
10		46

2016

787



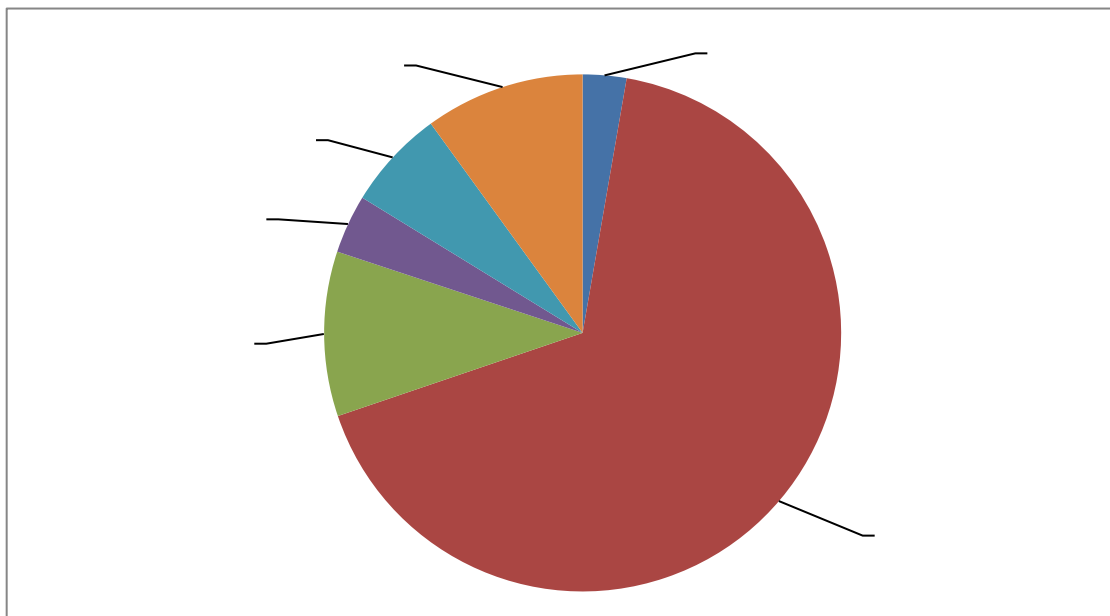
61.44%

1876

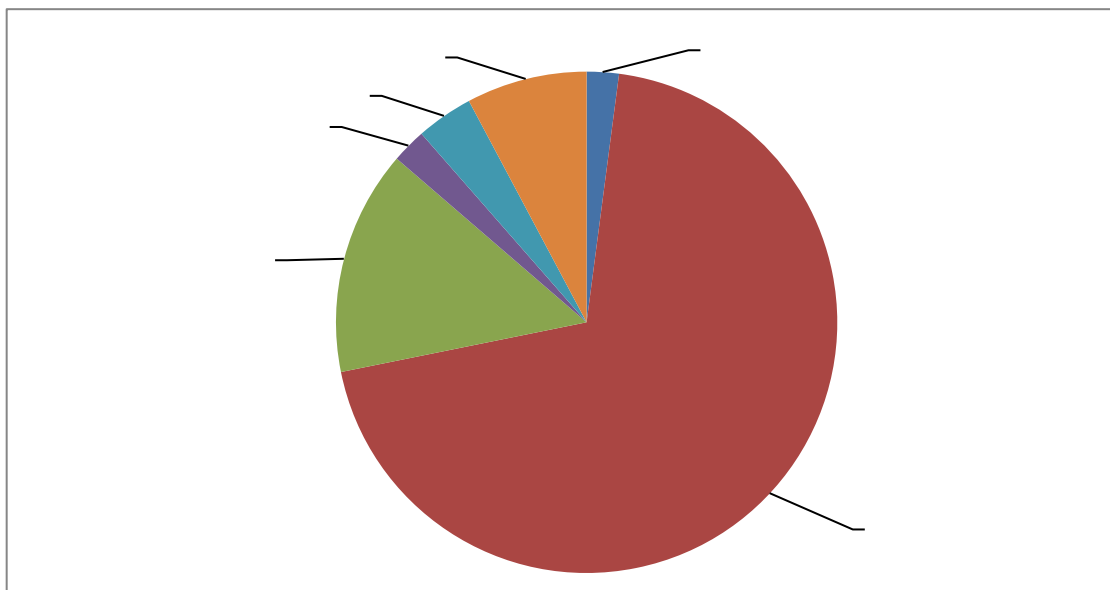
61.55%

19.13%

14.08%



3



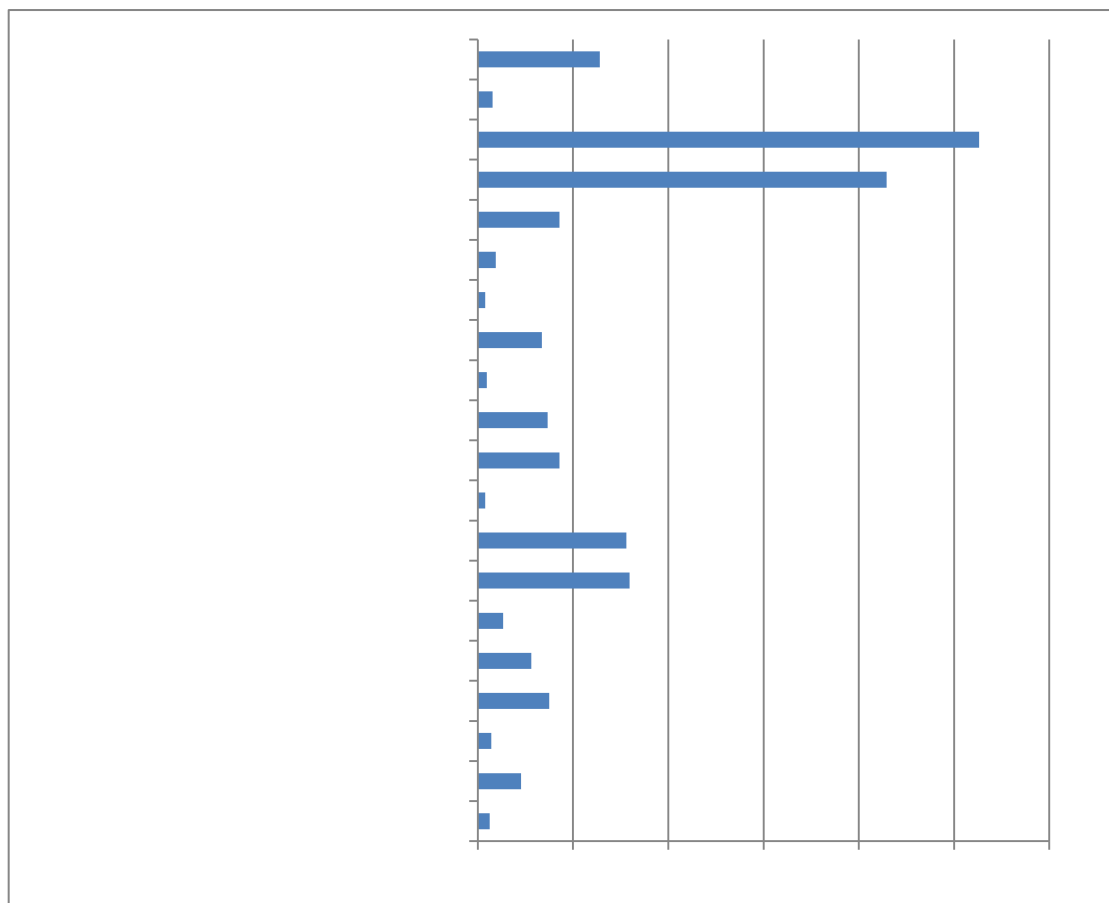
4

1.

26.31%

21.47%

7.96%



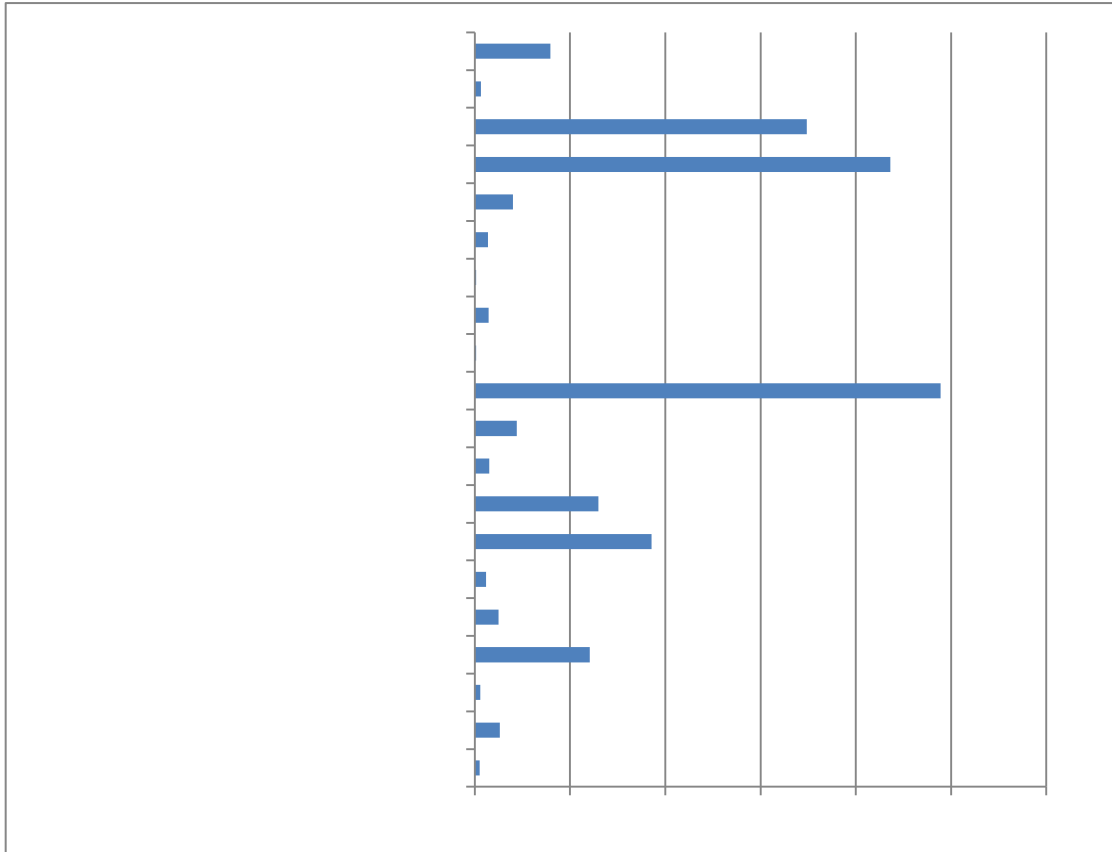
5

2.

24.44%

21.82%

17.42%



6

2016

80

127

2016

2016

36

31

5

21

15

2016



500

60%

2016

30

30

34.72%

6

1		178
2		151
3		127
4		104
5		102
6		92
7		84
8		68
9		60
10		53
11		46
12		46
13		42
14		37
15		32
16		29
17		27
18		25
19		25
20		22
21		20
22		19
23		18
24		16
25		15





第三章 分学院与分专业就业情况

7

	231	96.10%	159	99.37%	43	100.00%
	231	97.84%	193	100.00%	80	100.00%
	470	97.87%	317	98.74%	75	97.33%
	232	99.57%	176	99.43%	39	100.00%
	492	98.37%	300	99.67%	52	100.00%
	283	100.00%	182	100.00%	32	100.00%
	211	96.21%	155	99.35%	38	100.00%
	185	99.46%	101	100.00%	/	/
	164	95.12%	139	100.00%	50	100.00%
	138	97.10%	86	95.35%	20	100.00%
	115	99.13%	73	100.00%	16	100.00%
	95	100.00%	39	100.00%	14	100.00%
	73	95.89%	38	97.37%	11	100.00%
	78	100.00%	54	92.59%	35	100.00%
	264	96.59%	426	97.18%	80	96.25%
	138	95.65%	34	94.12%	/	/
	96	98.96%	67	98.51%	/	/
	90	96.67%	42	95.24%	/	/
	147	97.28%	123	98.37%	2	100.00%
	/	/	16	75.00%	2	100.00%
	/	/	4	50.00%	/	/
	/	/	5	100.00%	/	/
	3733	97.83%	2729	98.46%	589	99.15%

8

1		23	21	91.30%
2		96	93	96.88%
3		26	24	92.31%



28		197	197	100.00%
29		162	157	96.91%
30		49	46	93.88%
31		185	184	99.46%
32		22	19	86.36%
33		24	24	100.00%
34		25	25	100.00%
35		22	22	100.00%
36		51	46	90.20%
37		20	20	100.00%
38		43	43	100.00%
39		40	39	97.50%
40		25	24	96.00%
41		30	28	93.33%
42		42	42	100.00%
43		19	19	100.00%
44		54	53	98.15%
45		34	34	100.00%
46		24	24	100.00%
47		37	37	100.00%
48		73	70	95.89%
49		26	26	100.00%
50		52	52	100.00%
51		41	37	90.24%
52		23	23	100.00%
53		135	132	97.78%
54		40	38	95.00%
55		2	2	100.00%
56		23	23	100.00%
57		108	105	97.22%

58		30	27	90.00%
59		96	95	98.96%
60		26	26	100.00%
61		18	17	94.44%
62		46	44	95.65%
63		34	33	97.06%
64		113	110	97.35%

9

1		84	84	100.00%
2		51	51	100.00%
3		48	48	100.00%
4		5	5	100.00%
5		15	15	100.00%
6		35	35	100.00%
7		96	95	98.96%
8		104	104	100.00%
9		49	48	97.96%
10		4	4	100.00%
11		154	152	98.70%
12		13	13	100.00%
13		107	106	99.07%
14		25	25	100.00%
15		12	12	100.00%
16		86	85	98.84%
17		129	129	100.00%
18		117	117	100.00%
19		2	2	100.00%
20		25	24	96.00%



21		68	68	100.00%
22		96	96	100.00%
23		52	51	98.08%
24		93	93	100.00%
25		104	104	100.00%
26		4	4	100.00%
27		37	37	100.00%
28		71	71	100.00%
29		12	12	100.00%
30		19	19	100.00%
31		21	21	100.00%
32		61	58	95.08%
33		11	10	90.91%
34		9	9	100.00%
35		18	18	100.00%
36		37	37	100.00%
37		8	8	100.00%
38		11	11	100.00%
39		4	4	100.00%
40		24	24	100.00%
41		38	37	97.37%
42		54	50	92.59%
43		229	222	96.94%
44		15	14	93.33%
45		44	43	97.73%
46		2	2	100.00%
47		5	5	100.00%
48		28	28	100.00%
49		10	10	100.00%
50		10	10	100.00%

51		18	17	94.44%
52		37	36	97.30%
53		12	12	100.00%
54		15	14	93.33%
55		1	1	100.00%
56		6	6	100.00%
57		14	13	92.86%
58		6	5	83.33%
59		7	7	100.00%
60		26	25	96.15%
61		7	7	100.00%
62		34	34	100.00%
63		22	21	95.45%
64		20	19	95.00%
65		26	26	100.00%
66		8	8	100.00%
67		65	64	98.46%
68		1	1	100.00%
69		23	22	95.65%
70		6	5	83.33%
71		14	12	85.71%
72		1	0	0.00%
73		4	2	50.00%

10

1		38	38	100.00%
2		1	1	100.00%
3		23	23	100.00%
4		1	1	100.00%

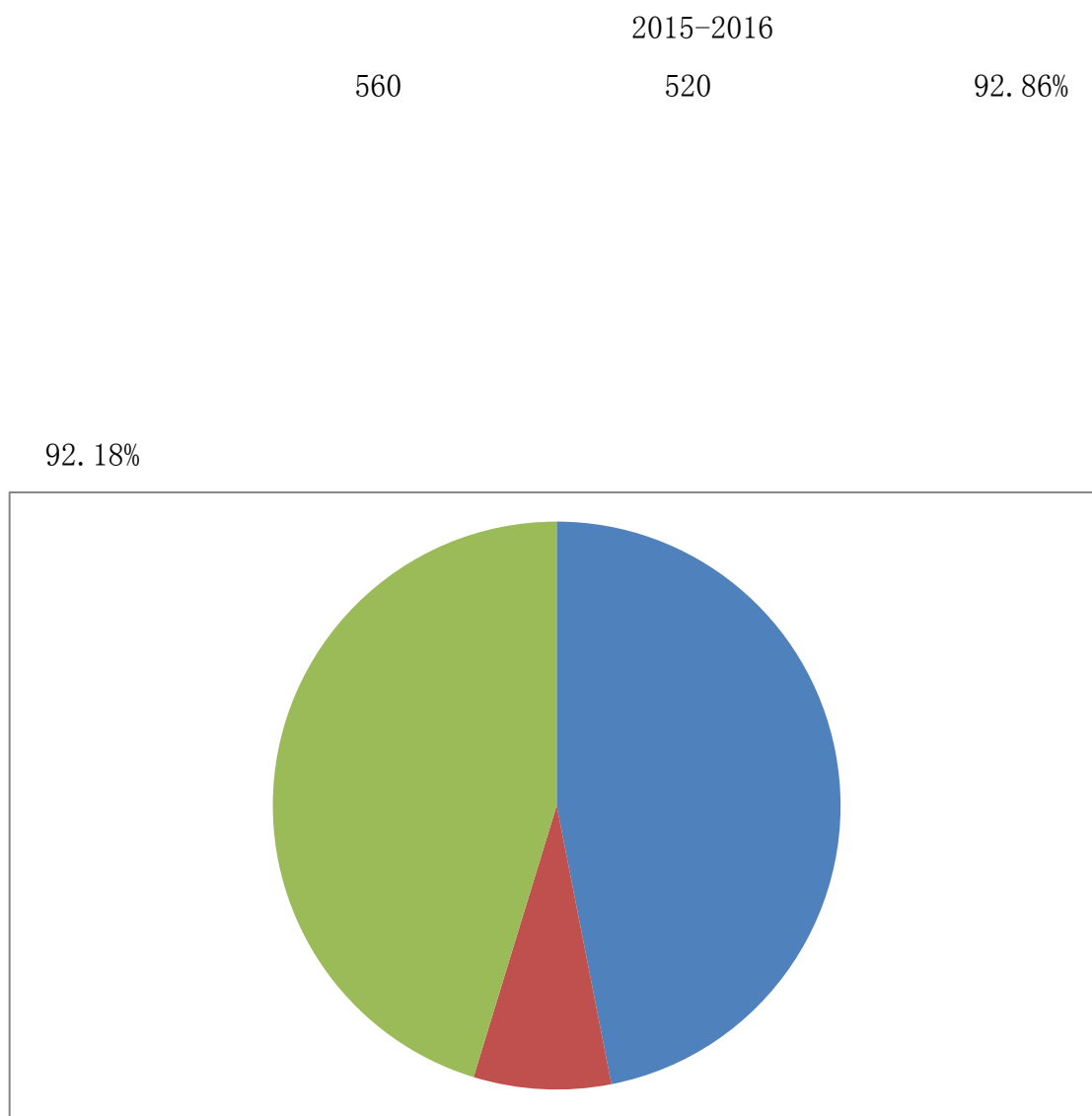


5		4	4	100.00%
6		37	37	100.00%
7		3	3	100.00%
8		1	1	100.00%
9		1	1	100.00%
10		17	17	100.00%
11		67	65	97.01%
12		1	1	100.00%
13		2	2	100.00%
14		3	3	100.00%
15		28	28	100.00%
16		7	7	100.00%
17		18	18	100.00%
18		2	2	100.00%
19		1	1	100.00%
20		3	3	100.00%
21		1	1	100.00%
22		31	31	100.00%
23		32	32	100.00%
24		1	1	100.00%
25		2	2	100.00%
26		12	12	100.00%
27		23	23	100.00%
28		1	1	100.00%
29		42	42	100.00%
30		8	8	100.00%
31		11	11	100.00%
32		1	1	100.00%
33		9	9	100.00%
34		14	14	100.00%

35		1	1	100.00%
36		10	10	100.00%
37		2	2	100.00%
38		2	2	100.00%
39		3	3	100.00%
40		8	8	100.00%
41		19	19	100.00%
42		8	8	100.00%
43		8	8	100.00%
44		6	6	100.00%
45		59	56	94.92%
46		12	12	100.00%
47		3	3	100.00%
48		2	2	100.00%

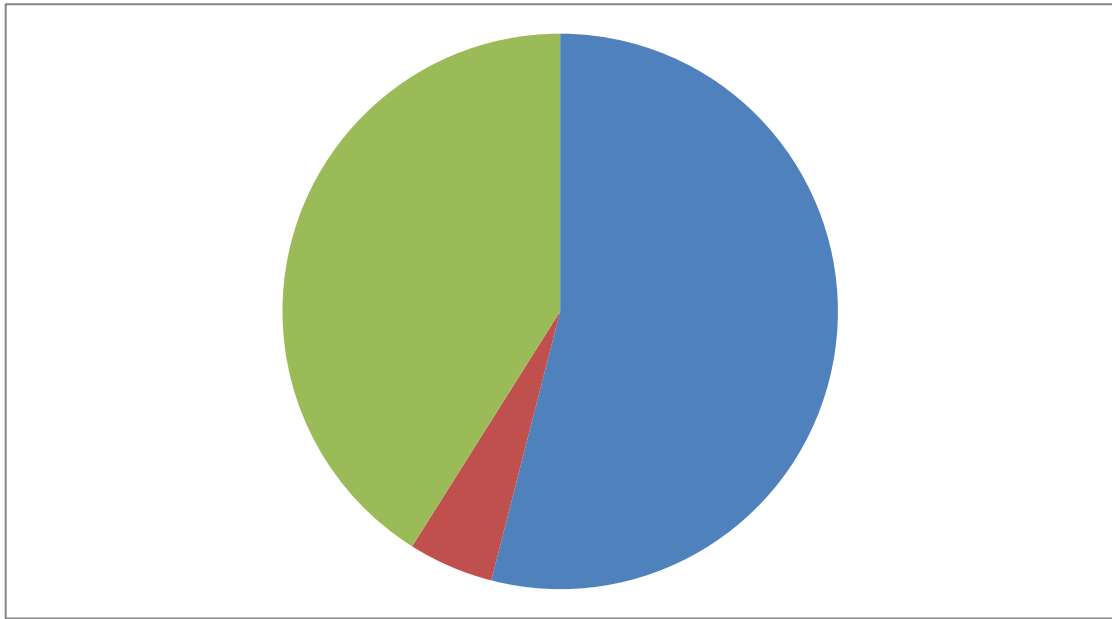


第四章 用人单位反馈



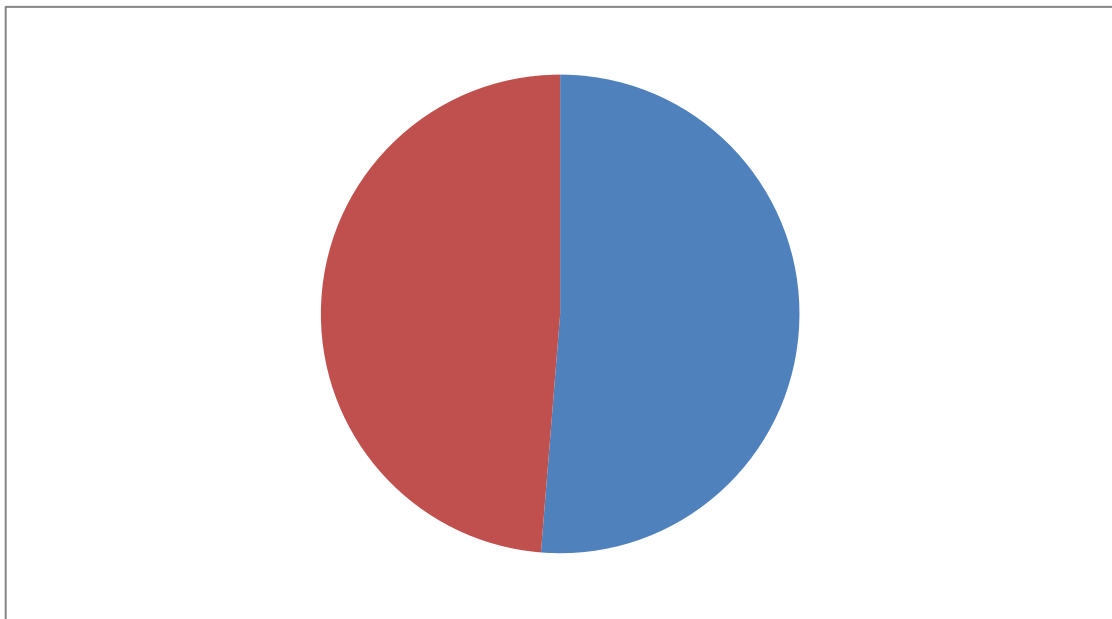
7

95.04%



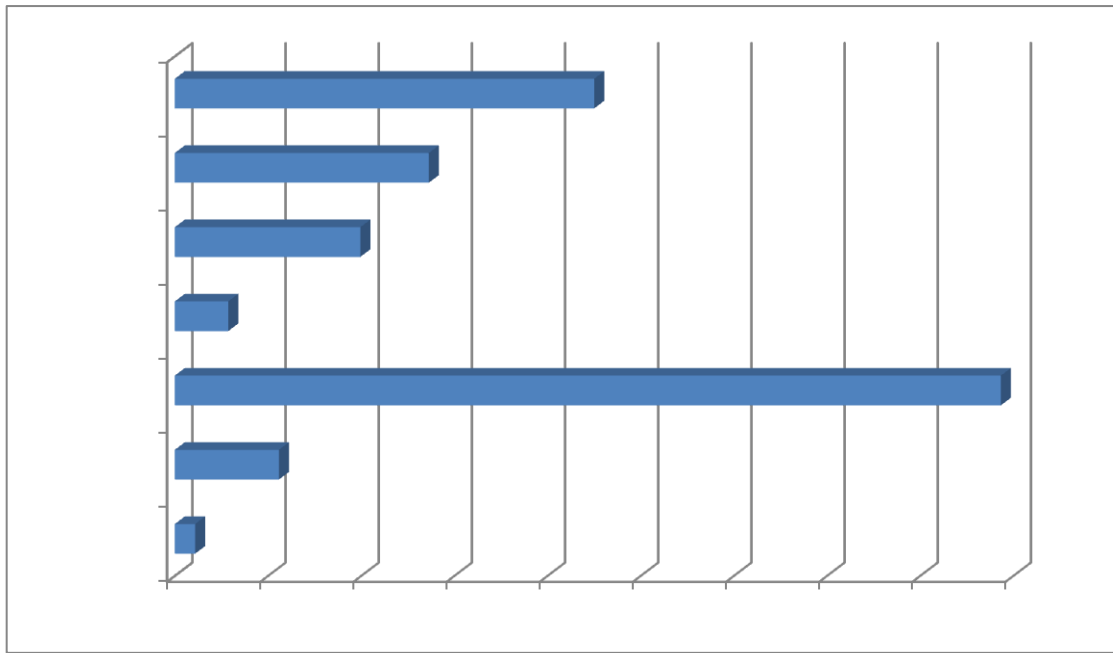
8

100%



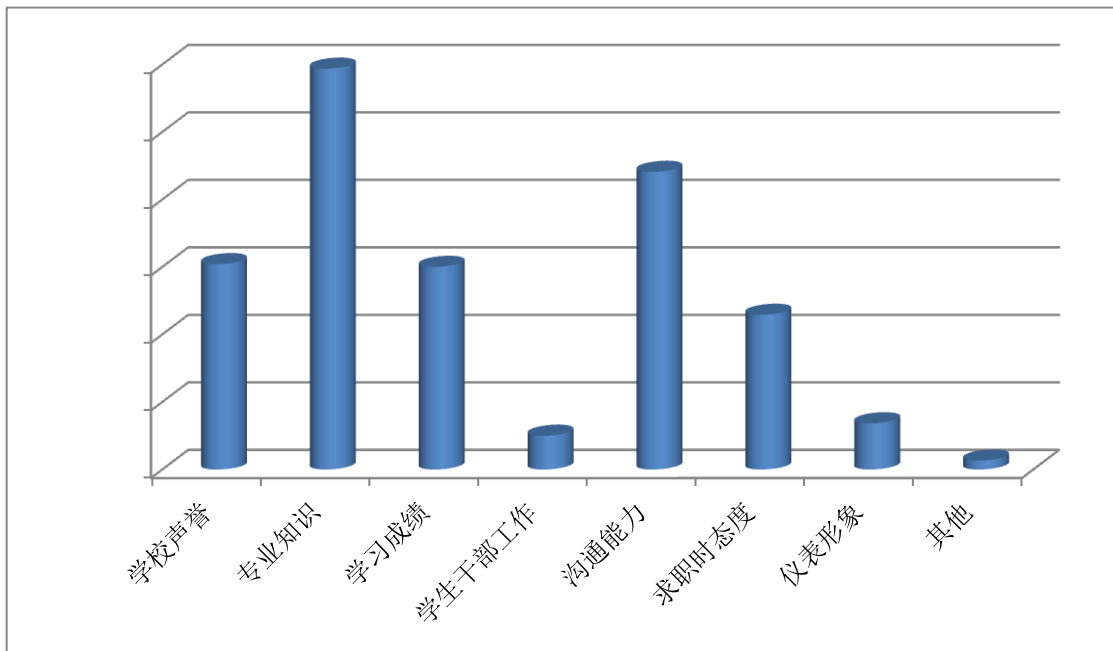
9

44.34% 22.51% 13.64%



10

22.05% 15.21% 29.69% 15.01%



11



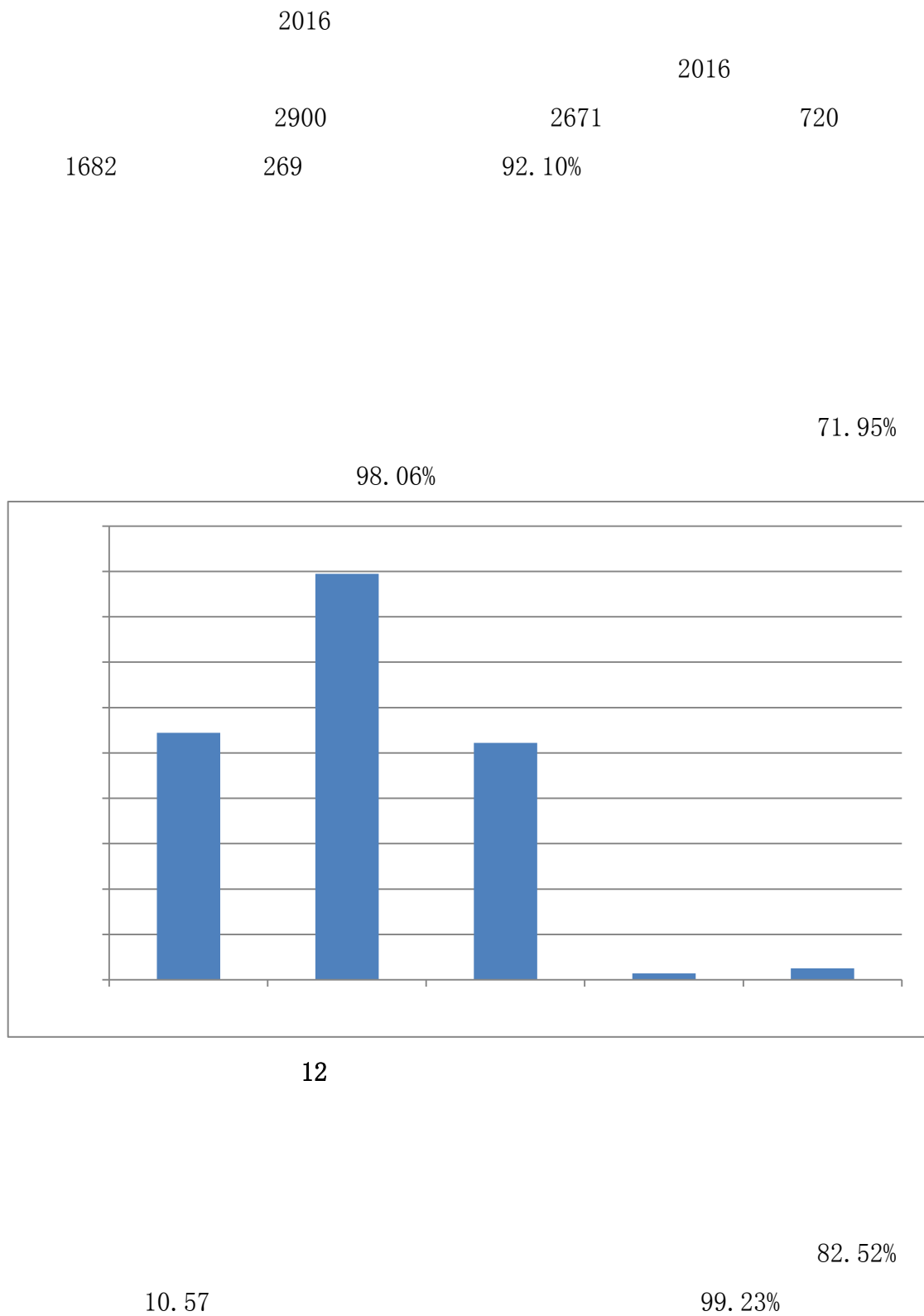
85%

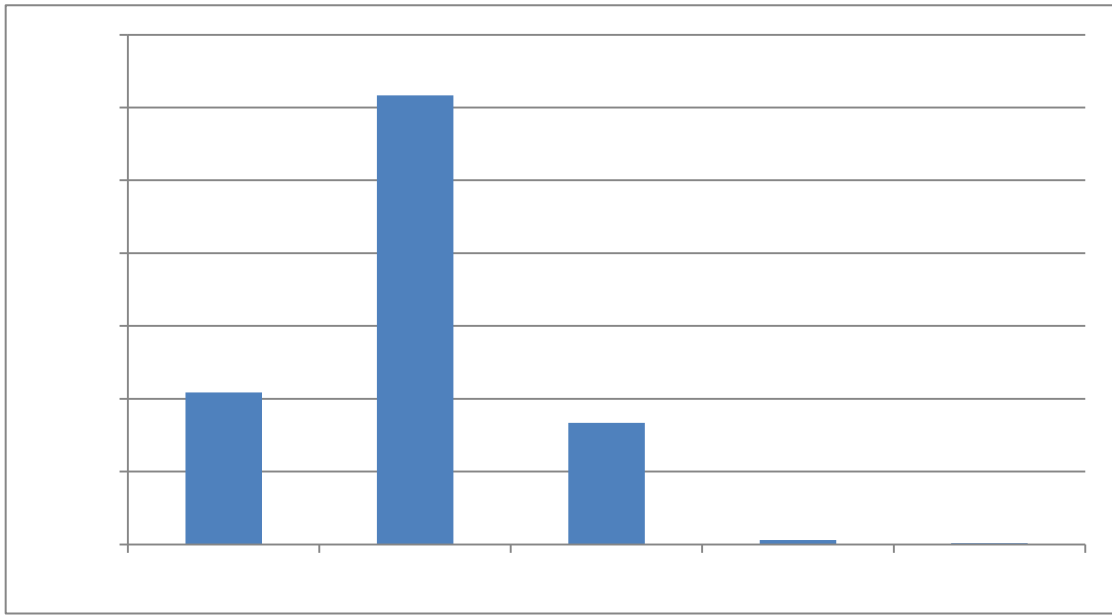
11

	43.35%	51.25%	5.40%	0.00%	0.00%
	43.71%	47.78%	8.51%	0.00%	0.00%
	31.01%	52.52%	15.69%	0.78%	0.00%
	53.09%	42.85%	3.67%	0.39%	0.00%
	35.59%	52.42%	11.60%	0.39%	0.00%
	41.05%	49.03%	9.14%	0.78%	0.00%
	34.62%	51.26%	13.35%	0.77%	0.00%
	36.63%	52.52%	10.27%	0.58%	0.00%
	35.85%	51.36%	11.63%	1.16%	0.00%
	28.74%	55.15%	15.53%	0.58%	0.00%
	43.08%	44.05%	12.28%	0.59%	0.00%
	37.72%	52.61%	8.51%	0.97%	0.19%
	24.47%	54.95%	18.64%	1.75%	0.19%
	26.07%	56.42%	15.95%	1.36%	0.20%



第五章 毕业生反馈



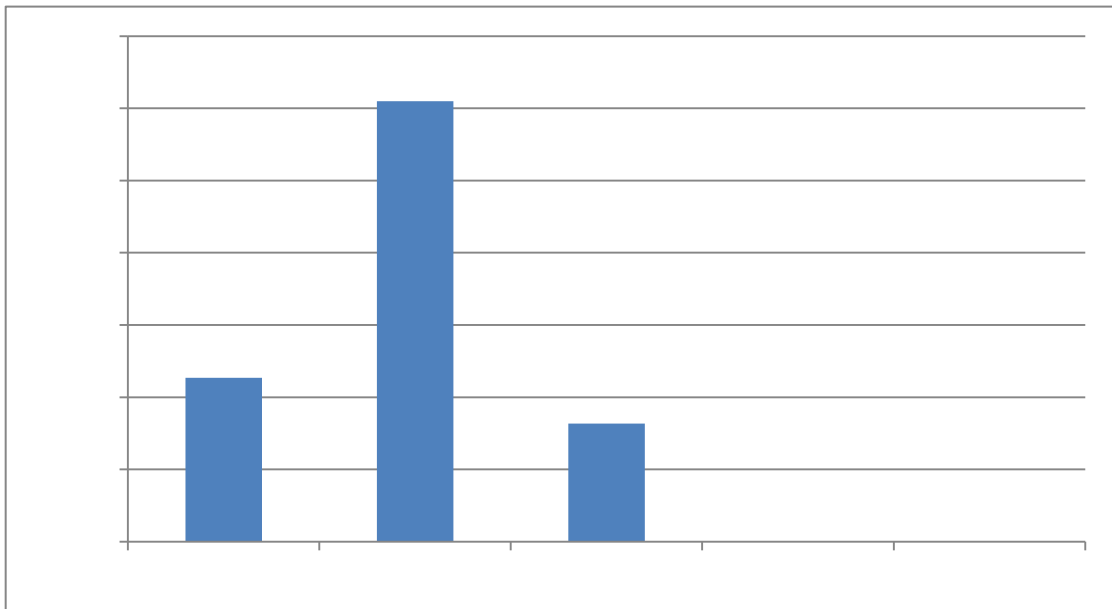


13

83.65%

1.13

100%



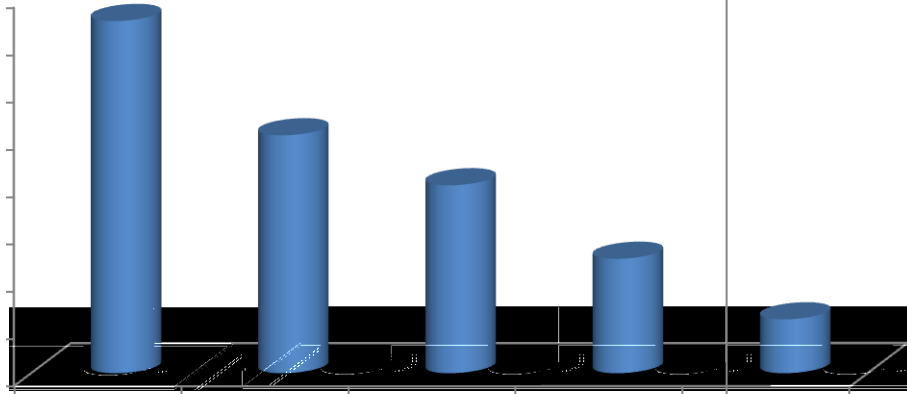
14

2016

97.3%

11

7



15

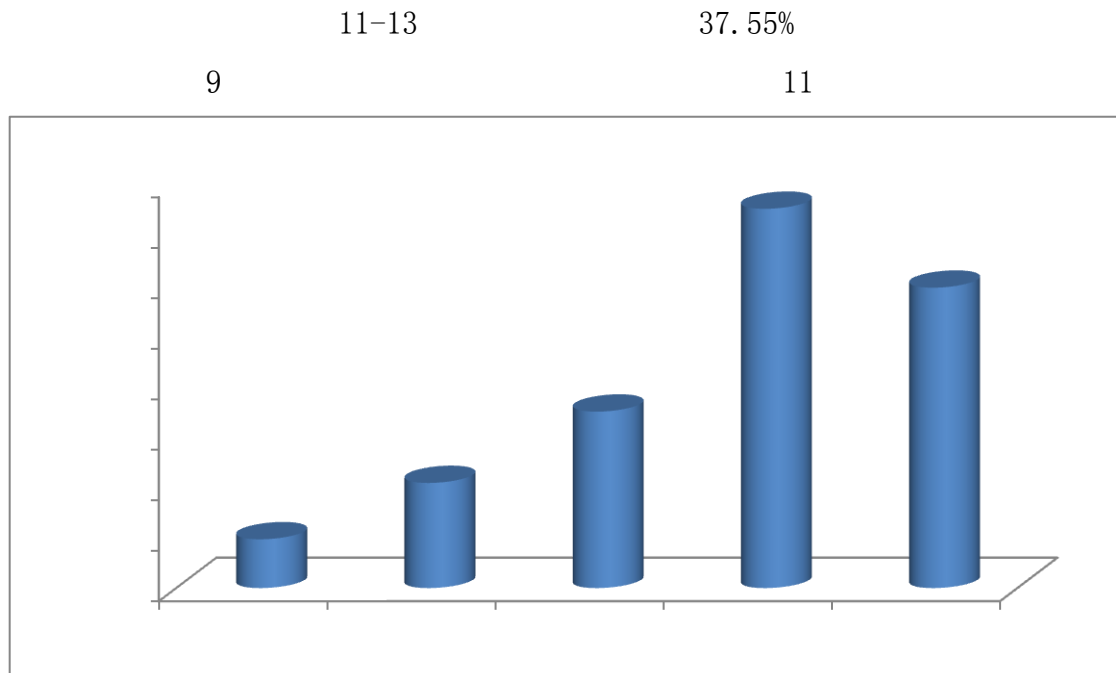
9-11

32.28%

9

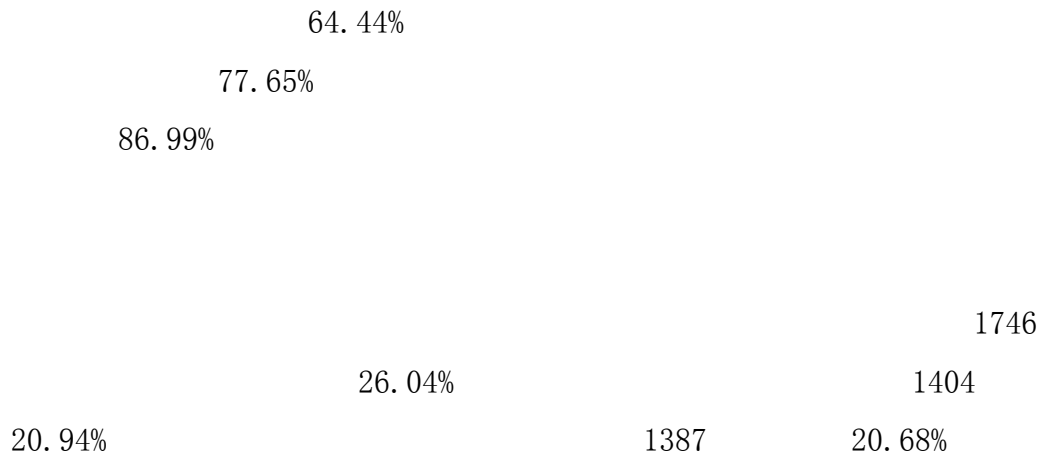
11

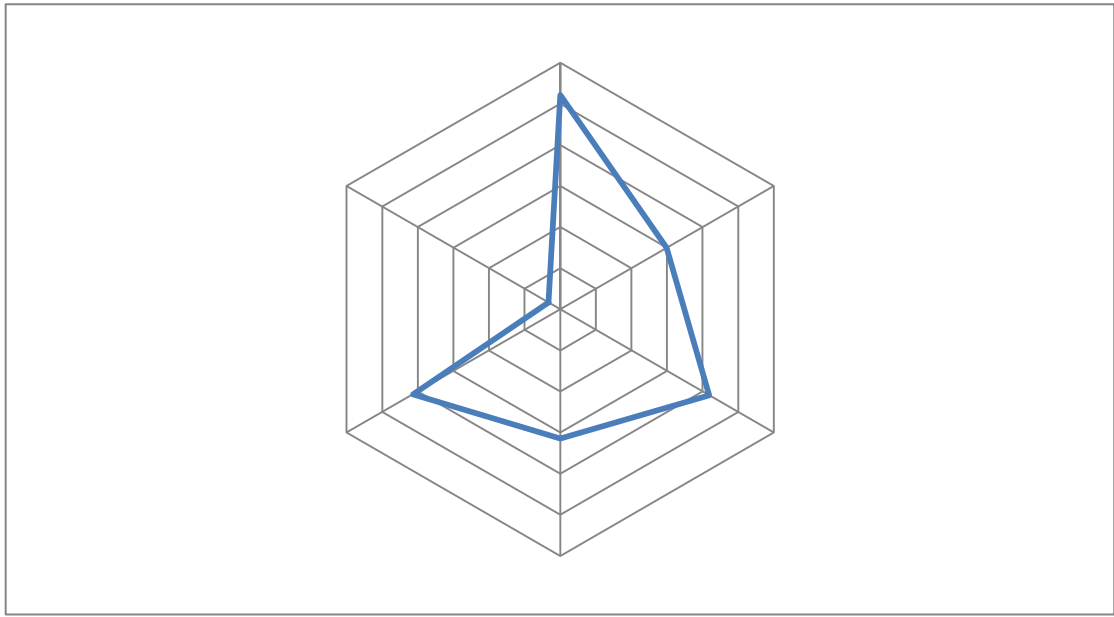
16



2016

11.40





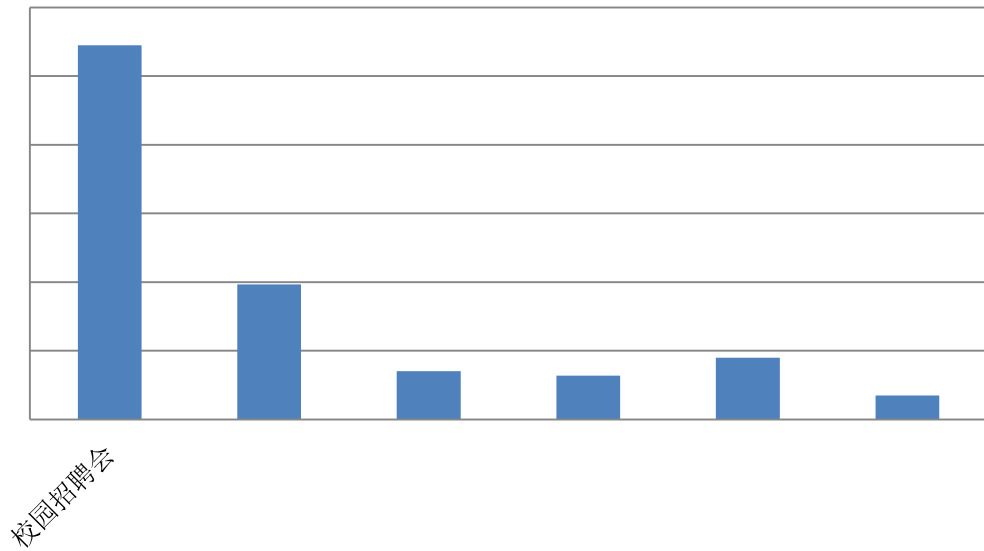
18

54.49%

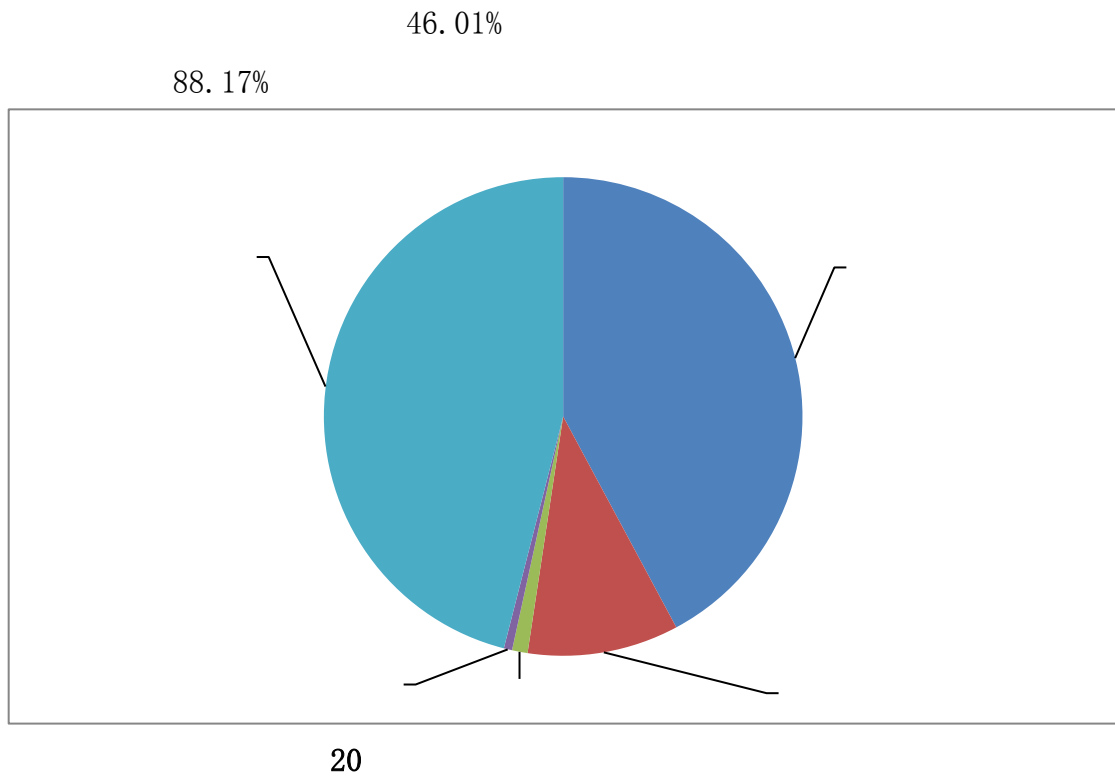
7.01%

19.66%

81.16%



19





第六章 就业特色工作

2015 11

22

2015 9 2016 6

34

13

357

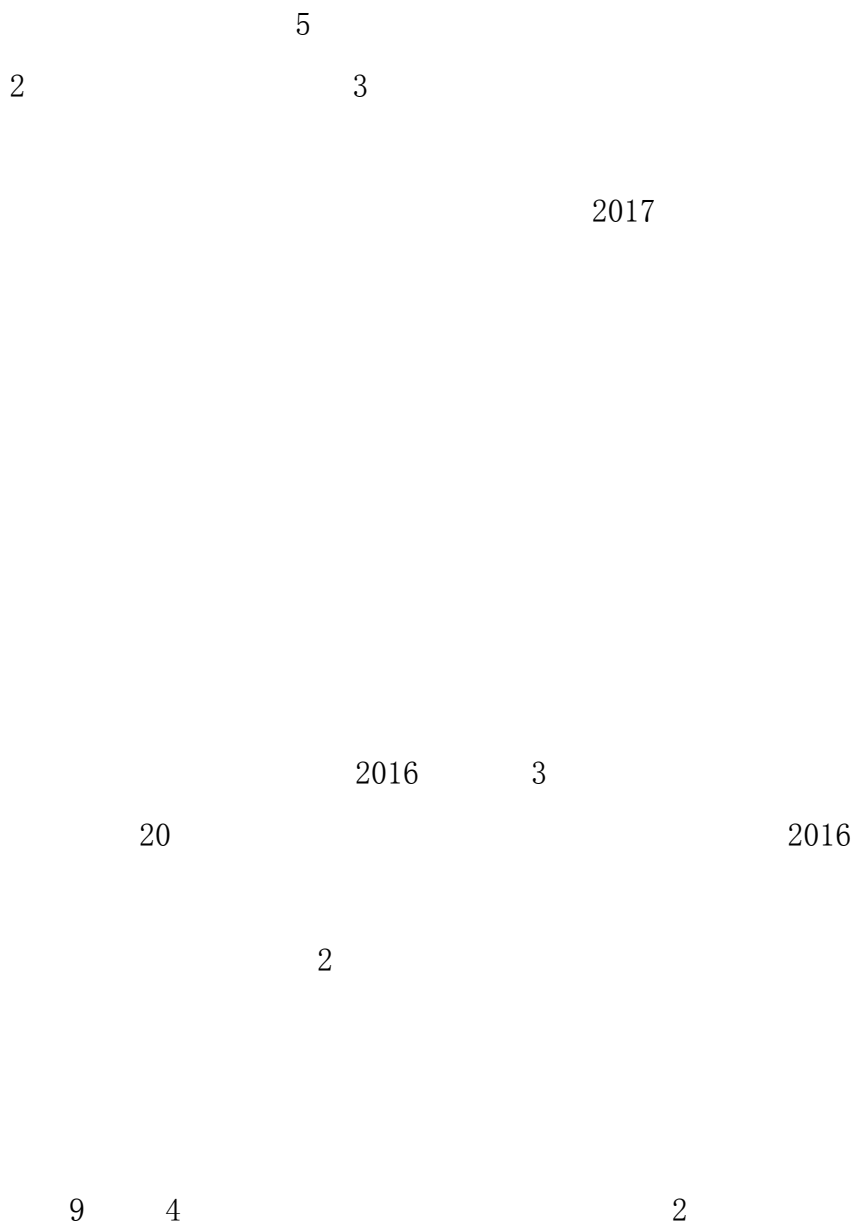
1953 (1310)

12 2015-2016

1		2015 09 15
2	2015	2015 09 16
3		2015 09 18
4		2015 09 21
5	2016	2015 09 22
6		2015 09 23
7		2015 09 23
8		2015 09 23
9	2016	2015 09 24
10		2015 10 09
11		2015 10 13
12	2016	2015 10 14

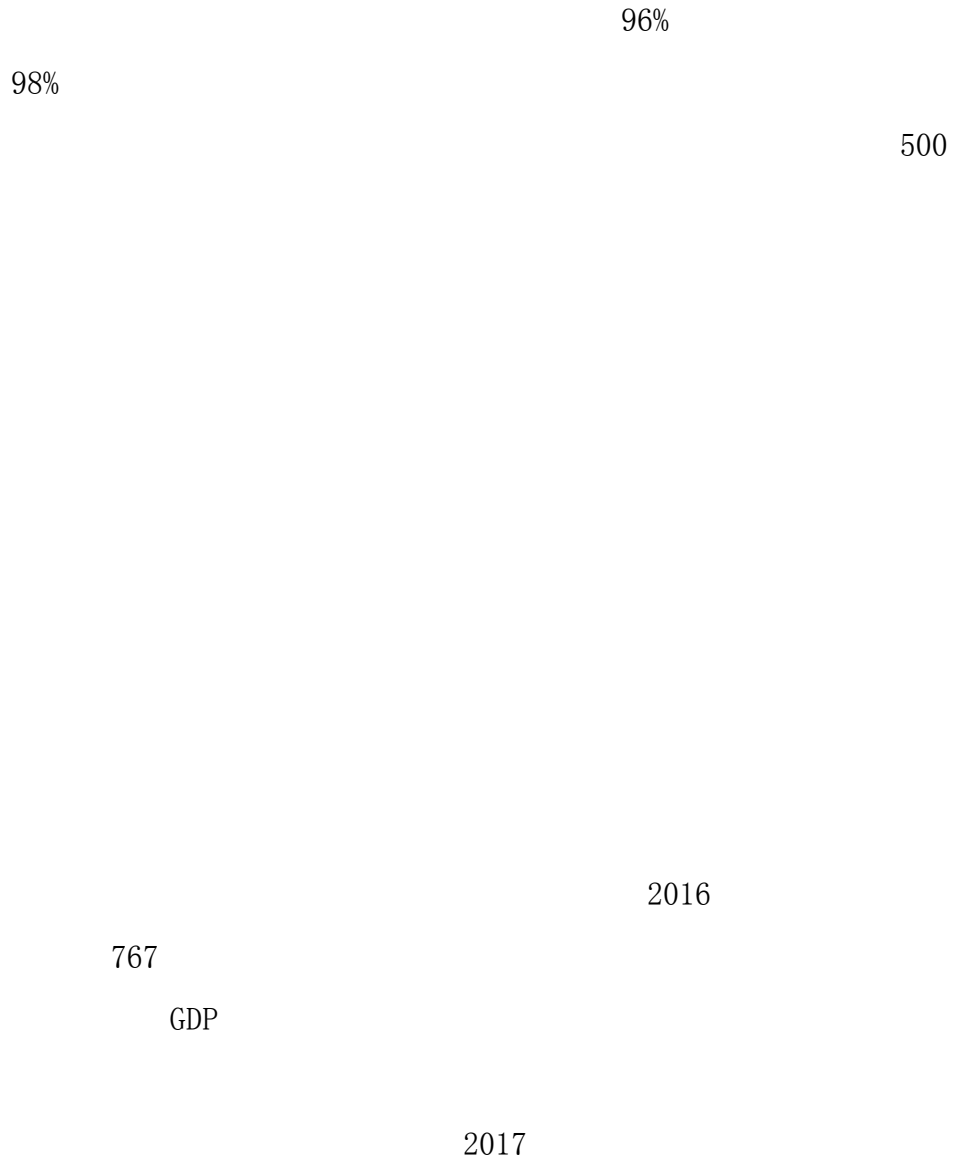
13		2015 10 14
14		2015 10 15
15		2015 10 22
16		2015 10 23
17		2015 10 28
18		2015 10 29
19		2015 11 02

20





第七章 就业趋势与反馈





- -

- -

- -